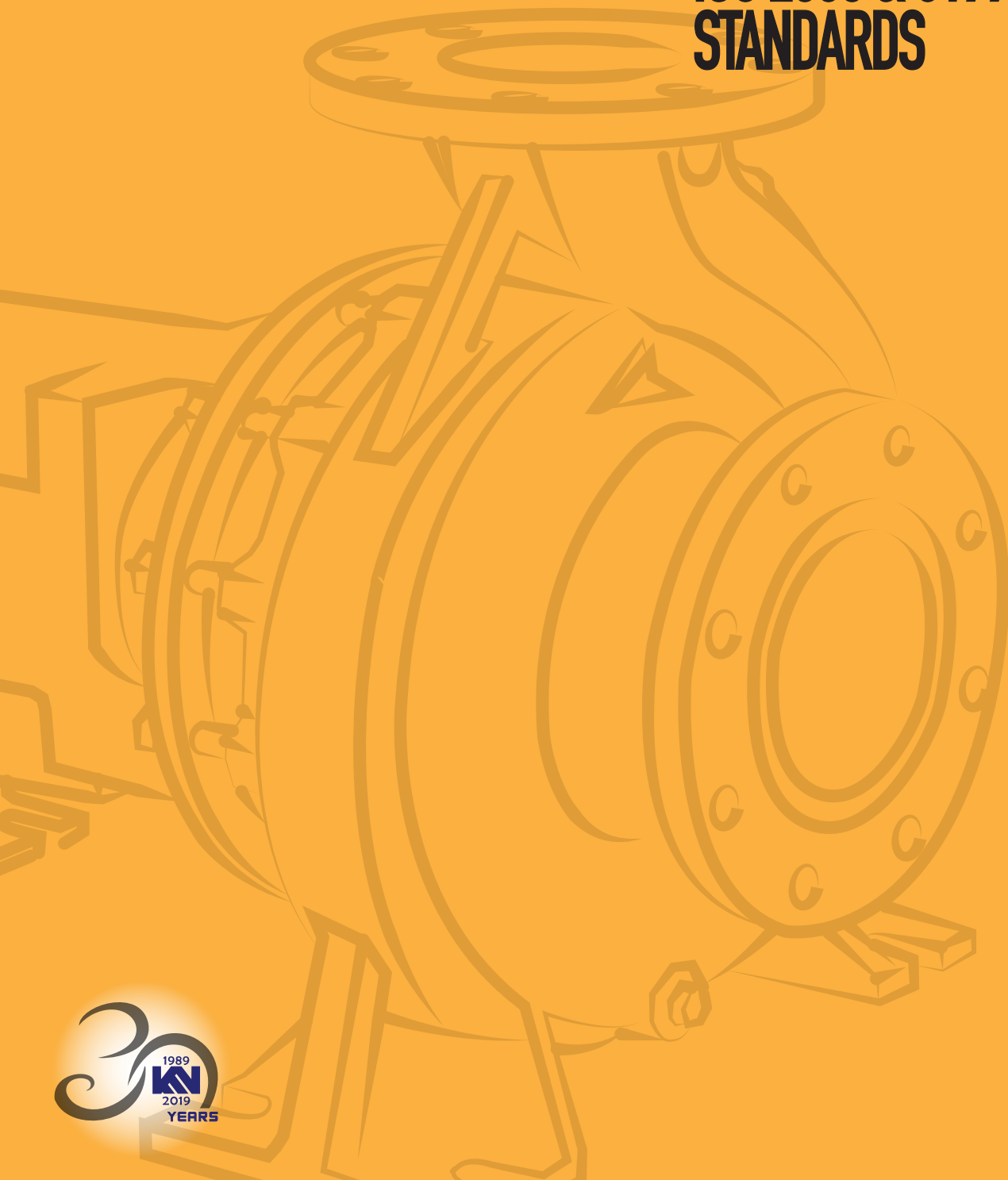


KEWPUMP®

KS-SG2

**CHEMICAL PROCESS PUMP
COMPLIES WITH
ISO 2858 & 5199
STANDARDS**



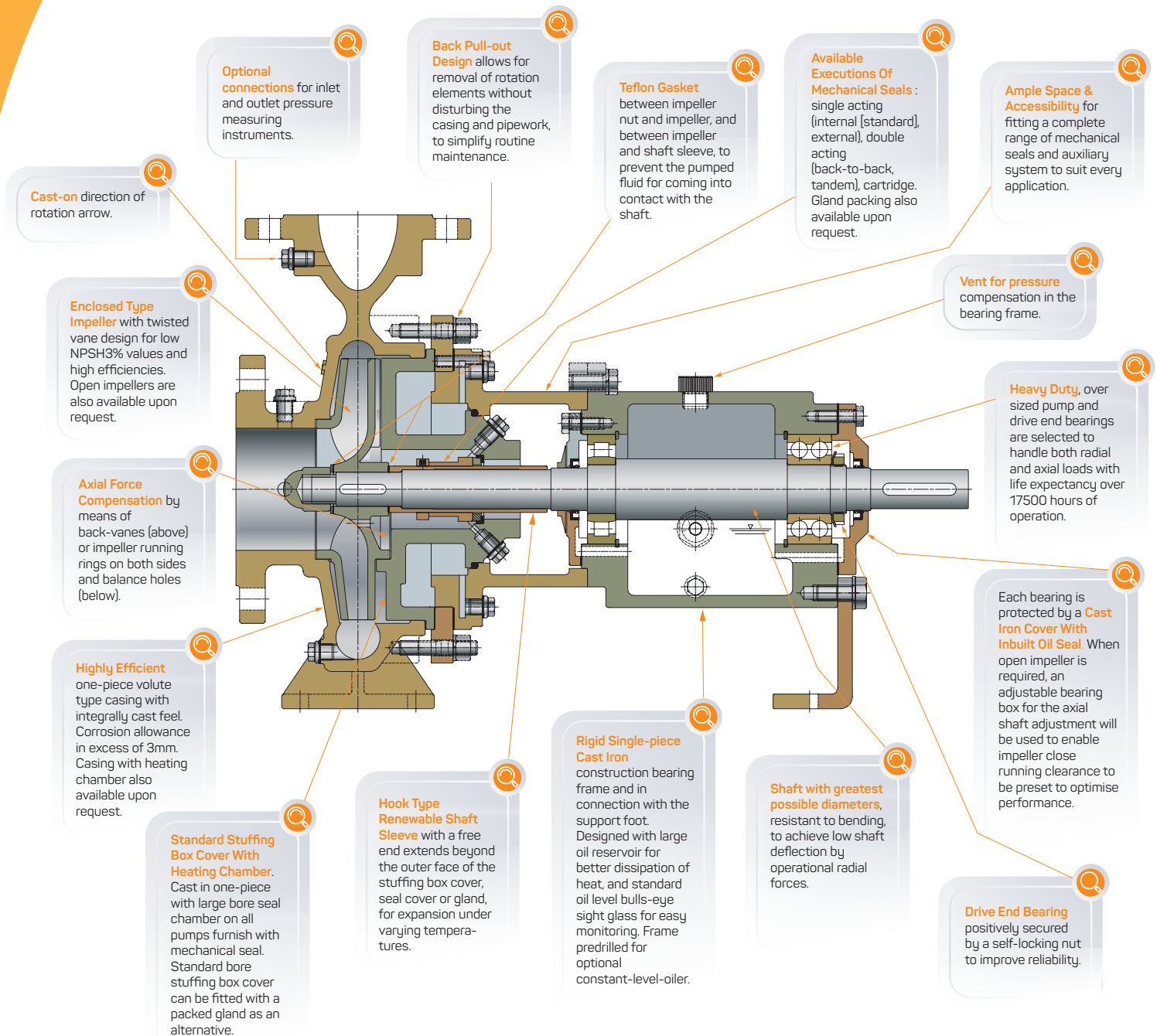


FULLY COMPLIANCE WITH INTERNATIONAL STANDARDS

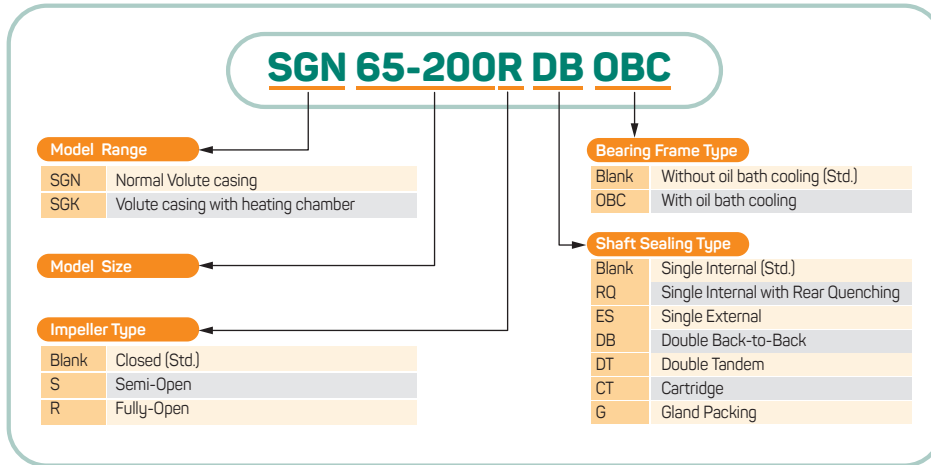
Dimensions and Performances	- ISO 2858:1975
Design and Construction	- ISO 5199:2002
Flanges Dimensions	- ISO 7005-1:1992 - PN16
Mechanical Seals	- DIN 24960
Baseplates Dimensions	- ISO 3661:1977

MATERIALS OF CONSTRUCTION

All standard pump components in contact with the fluid are made of Stainless Steel 316 (CF-8M). Other materials are also available upon request.



MODEL DESIGNATION



PART NO. NOTATIONS

XXX . X . X

· Part No. with standard material and type are shown in the parts list.
Example Part No. : 120.1.C (Item = Impeller Material = SS304 Type = Closed)

ITEM CODE

- For parts which have no variation in material and type, Part No. contains of Item Code only.

Example Part No. : 440 (Item = Deflector)

MATERIAL CODE

For Item Codes

100, 104, 120, 133, 134, 206, 212, 213, 214, 215, 218, 401, 402, 409 & 463 only:

1	SS304
2	SS316
3	CA40
4	Ni-Hard
5	Cast Iron
6	Ductile Iron
7	Alloy 20
8	Mild Steel
9	CD 4MCu

For Item Codes

200, 204 & 205 only:

Material codes according to DIN 24960 Standard.

Example :

BVVG = Carbon vs. Ceramic with Viton elastomers

- Available materials for the above items are depended on the product specifications.
- For parts which have no variation in type, Part No. contains of Item Code and Material Code only.

Example Part No: 213.5 (Item = Gland Material = Cast Iron)

TYPE CODE

For Item Codes

100 only:

J With Heating Chamber

For Item Code

300 only:

OBC With Oil Bath Cooling

For Item Codes

100, 120 & 300 only:

C Closed

S Semi-Open

R Fully-Open

For Item Code

212 only:

IS Single Internal

ES Single External

DT Double Tandem

RQ Single Internal with Rear Quenching

DB Double Back-to-Back

G Gland Packing

For Item Code

214 only:

M Mechanical Sealing

G Gland Packing

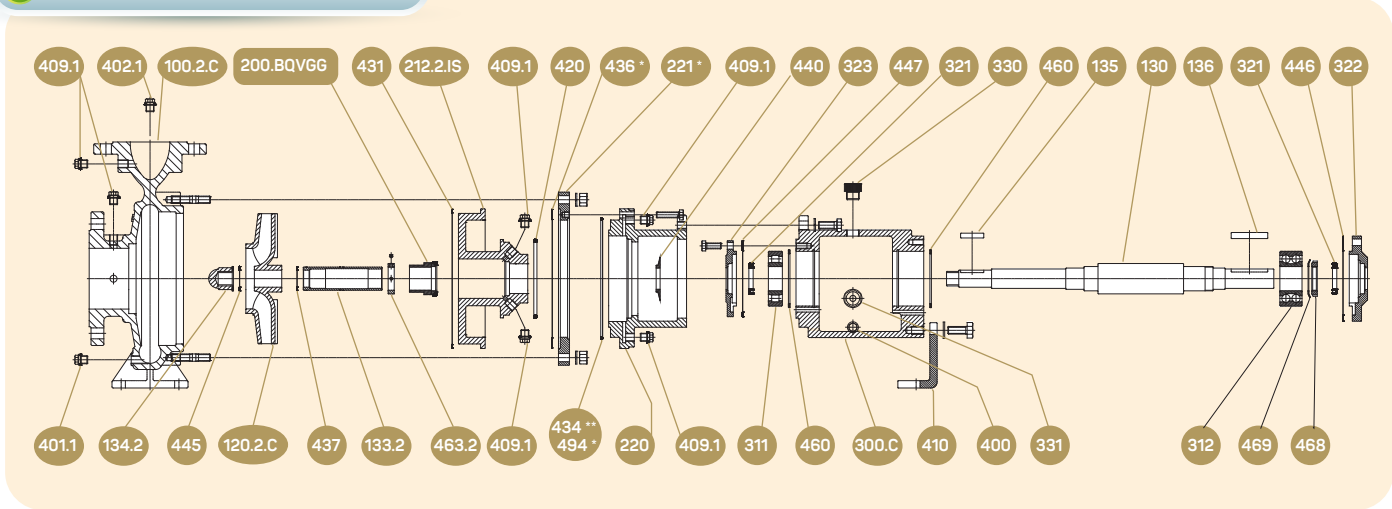
- Available types for the above items are depended on the product specifications.

Example Part No. :

212.2.DB (Item = Stuffing Box Cover Material = SS316 Type = Double Back-to-Back)

Kewpump (M) Sdn. Bhd. reserves the right to change the materials and types to keep pace with technological progress.

STANDARD ARRANGEMENT



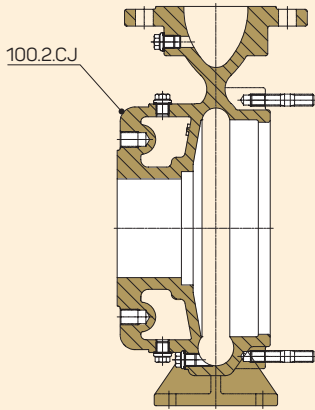
Part No.	Description	Standard Material
100.2.C	Casing for Closed Impeller	Stainless Steel 316
100.2.CJ	Casing for Closed Impeller with Heating Chamber	Stainless Steel 316
100.2.S/R	Casing for Open Type Impeller	Stainless Steel 316
100.2.S/RJ	Casing for Open Type Impeller with Heating Chamber	Stainless Steel 316
104.2	Casing Wear Plate	Stainless Steel 316
120.2.C	Closed Impeller	Stainless Steel 316
120.2.S	Semi-Open Impeller	Stainless Steel 316
120.2.R	Fully-Open Impeller	Stainless Steel 316
130	Shaft	Stainless Steel 304
133.2	Shaft Sleeve	Stainless Steel 316
134.2	Impeller Nut	Stainless Steel 316
135	Key for Impeller	Stainless Steel 304
136	Shaft End Key	Stainless Steel 304
200.BQVGG	Mechanical Seal	Carbon vs. Silicon Carbide
201	Packing	P.T.F.E.
202	V-Seal	Synthetic Rubber
204.BQVGG	Pump End Mechanical Seal	Carbon vs. Silicon Carbide
205.BQVGG	Atmospheric End Mechanical Seal	Carbon vs. Silicon Carbide
206.2	Lantern Ring	Stainless Steel 316
212.2.IS	Stuffing Box Cover for Single Internal	Stainless Steel 316
212.2.RQ	Stuffing Box Cover for Single Internal with Rear Quenching	Stainless Steel 316
212.2.ES	Stuffing Box Cover for Single External	Stainless Steel 316
212.2.DB	Stuffing Box Cover for Double Back-to-Back	Stainless Steel 316
212.2.DT	Stuffing Box Cover for Double Tandem	Stainless Steel 316
212.2.G	Stuffing Box Cover for Gland Packing	Stainless Steel 316
213.2	Gland	Stainless Steel 316
214.2.M	End Ring for Mechanical Sealing	Stainless Steel 316
214.2.G	End Ring for Gland Packing	Stainless Steel 316
215.2	Seal Cover	Stainless Steel 316
220	Frame Adaptor	Cast Iron
221 *	Adaptor Extension Ring	Cast Iron
300.C	Bearing Frame for Closed Impeller	Cast Iron

Part No.	Description	Standard Material
300.COBC	Bearing Frame for Closed Impeller with Oil Bath Cooling	Cast Iron
300.S/R	Bearing Frame for Open Type Impeller	Cast Iron
300.S/ROBC	Bearing Frame for Open Type Impeller with Oil Bath Cooling	Cast Iron
303	Adjustable Bearing Box	Cast Iron
311	Pump End Bearing	Steel
312	Drive End Bearing	Steel
321	Oil Seal	Synthetic Rubber
322	Drive End Bearing Cover	Cast Iron
323	Pump End Bearing Cover	Cast Iron
330	Oil Cover	Aluminium Alloy
331	Oil Gauge	Aluminium Alloy + Glass
340	Bearing Frame Cooling Coil	Copper
400	Bearing Frame Drain Plug	Stainless Steel 304
401.1	Casing Drain Plug	Stainless Steel 304
402.1	Venting Plug	Stainless Steel 304
409.1	Connection Plug	Stainless Steel 304
410	Support Foot	Cast Iron
420	Stuffing Box Cover "O" Ring	Synthetic Rubber
428	Bearing Box "O" Ring	Synthetic Rubber
431	Stuffing Box Cover Gasket	P.T.F.E.
434**	Frame Adaptor Gasket	Asbestos Sheet
436*	Adaptor Extension Ring Gasket	Asbestos Sheet
437	Shaft Sleeve Gasket	P.T.F.E.
438	Seal Cover Gasket	P.T.F.E.
440	Deflector	Synthetic Rubber
445	Impeller Nut Gasket	P.T.F.E.
446	Drive End Bearing Cover Gasket	Oil Proof Paper
447	Pump End Bearing Cover Gasket	Oil Proof Paper
448	End Ring Gasket	P.T.F.E.
460	Cir Clip	Steel
463.2	Abutment Ring	Stainless Steel 316
468	Bearing Nut	Steel
469	Bearing Washer	Steel
481	Cooling Coil Adaptor	Stainless Steel 304
491	Cooling Coil "O" Ring	Synthetic Rubber
494*	Frame Adaptor "O" Ring	Synthetic Rubber

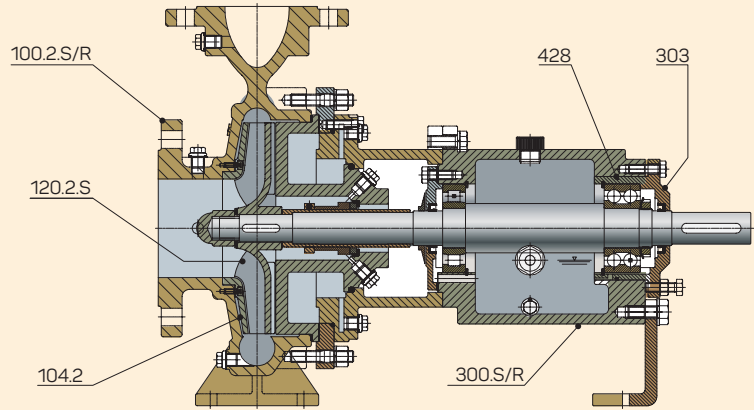
* For all models except 32-130, 40-130, 50-130, 65-130, 65-160, 80-160, 100-260, 125-260, 125-320, 125-400, 150-200, 150-260 and 150-320

** For models 32-130, 40-130, 50-130, 65-130, 65-160, 80-160, 100-260, 125-260, 125-320, 125-400, 150-200, 150-260 and 150-320

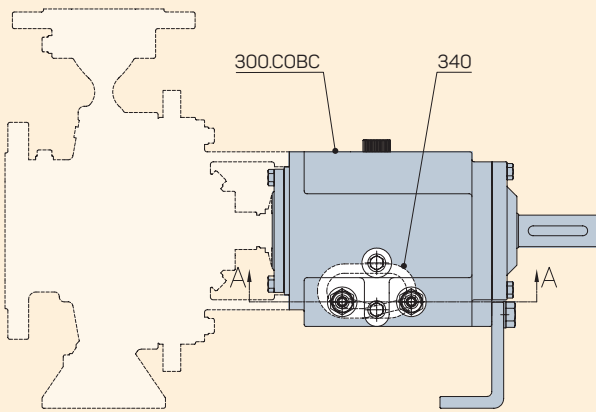
DESIGN VARIANTS



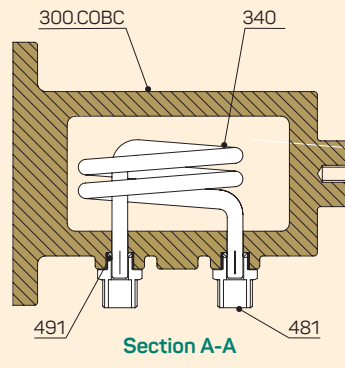
Casing with Heating Chamber



Open Type Impeller with Casing Wear Plate & Axial Adjustment

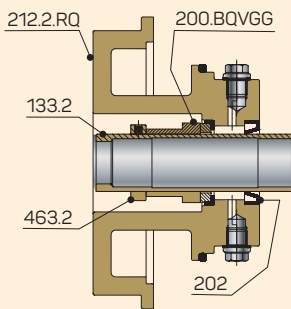


Bearing Frame with Oil Cooling

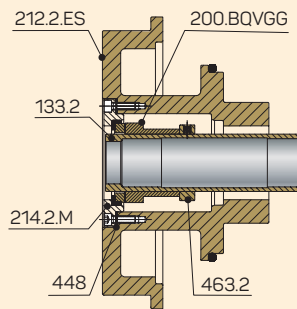


Section A-A

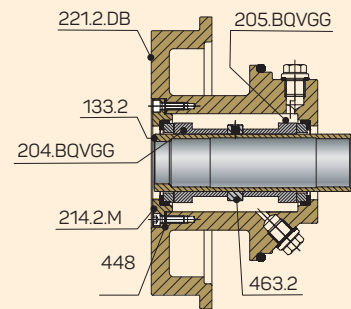
SHAFT SEAL OPTIONS



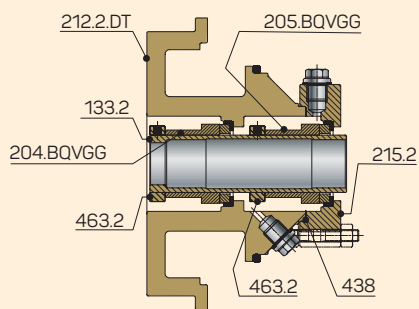
Single Internal with Rear Quenching



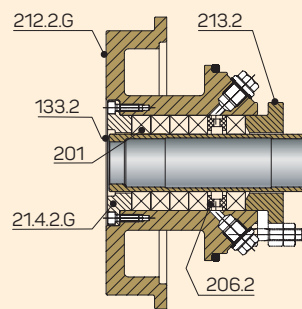
Single Internal



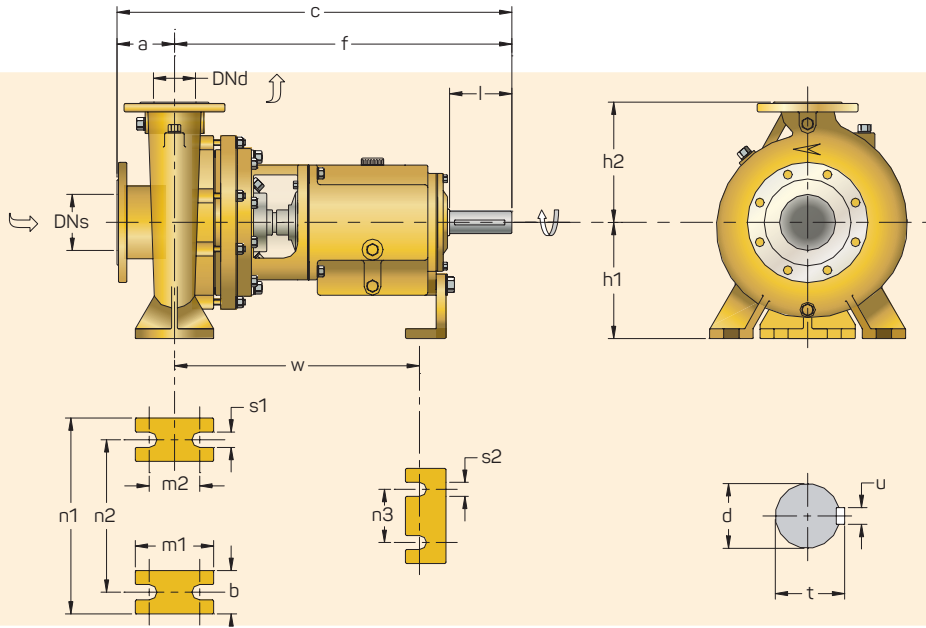
Double Back-to-Back



Double Tandem



Gland Packing

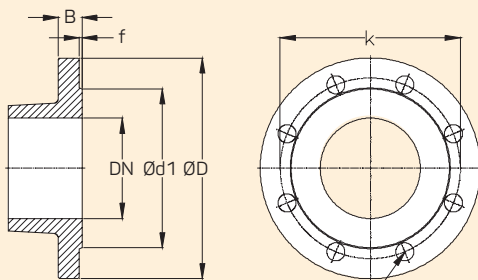


Dimensions in mm

PUMP MODEL	Flanges		Pump Dimensions					Foot Dimensions						Shaft End						
	DNd	DNs	a	f	c	h1	h2	b	m1	m2	n1	n2	n3	s1	s2	w	d	l	t	u
32-130	32	50	80	385	465	112	140	50	100	70	190	140	110	14	14	285	24	50	27	8
32-160						132	160				240	190								
32-200						160	180				240	190								
32-260	40	65	100	500	600	180	225	65	125	95	320	250	110	14	14	370	32	80	35	10
40-130						112	140				210	160								
40-160						132	160				240	190								
40-200						160	180				265	212								
40-260	50	80	125	500	625	180	225	65	125	95	320	250	110	14	14	370	32	80	35	10
40-320						200	250				345	280								
50-130						132	160				240	190								
50-160	65	100	100	385	485	160	180	50	100	70	265	212	110	14	14	285	24	50	27	8
50-200						200	200				265	212								
50-260						180	225				320	250								
50-320						225	280				345	280								
65-130	80	125	125	500	625	180	225	65	125	95	320	250	110	14	14	370	32	80	35	10
65-160						225	280				345	280								
65-200						200	250				360	280								
65-260						250	315				400	315								
65-320 ¹⁾	80	125	530	655	625	225	280	80	160	120	400	315	110	14	14	370	32	80	35	10
80-160						225	280				345	280								
80-200						250	315				400	315								
80-260						225	280				345	280								
80-320 ¹⁾	100	125	140	530	670	250	315	100	200	150	400	315	110	18	14	370	32	80	35	10
80-400 ¹⁾						280	355				435	355								
100-160 ²⁾						200	280				340	260								
100-200	150	200	160	500	660	280	375	100	200	150	500	400	110	23	14	370	32	80	35	10
100-260 ¹⁾						315	400				435	355								
100-320 ¹⁾						250	315				400	315								
100-400 ¹⁾						280	355				435	355								
125-200 ²⁾	125	150	140	500	640	315	315	80	160	120	400	315	110	18	14	370	32	80	35	10
125-260 ¹⁾						250	355				400	315								
125-320 ¹⁾						280	355				400	315								
125-400 ¹⁾						315	400				435	355								
150-200 ²⁾	150	200	160	500	690	315	450	100	200	150	550	450	110	23	18	500	48	110	51.5	14
150-260 ¹⁾						400	450				435	355								
150-320						280	375				435	355								
150-400						315	450				435	355								

¹⁾ In these models the dimension "l" is 15mm shorter than the specified in ISO 2858. The dimension "f" is according to ISO 2858

²⁾ These models are additional sizes and not specified in ISO 2858



Product specifications subject to change without prior notice.

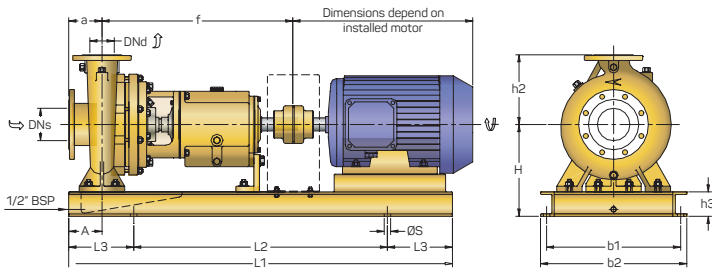
Dimensions in mm

Nominal Dia.	Flange		Raised Face		Drilling*			Bolting
	D	B	d1	f	No.	d2	k	
32	140	18	76	2	4	18	100	M16
40	150	18	84	2	4	18	110	M16
50	165	20	99	2	4	18	125	M16
65	185	20	118	2	4**	18	145	M16
80	200	20	132	2	8	18	160	M16
100	220	22	156	2	8	18	180	M16
125	250	22	184	2	8	18	210	M16
150	285	24	211	2	8	22	240	M20
200	340	24	266	2	12	22	295	M20

Flange dimensions and drilling according to ISO 7005-1:1992 - PN16

* Holes equally spaced straddling pump centreline

** Number of holes drilled less than the specified in ISO 7005-1:1992 - PN16



Baseplate Dimensions According to ISO 3661

Baseplate Number	Dimensions in mm							For Bolt
	b1	b2	h3	L1	L2	L3	S	
3661.2	320	360	100	800	540	130	18	M16
3661.3	350	390	100	900	600	150	18	M16
3661.4	400	450	100	1000	660	170	22	M20
3661.5	440	490	100	1120	740	190	22	M20
3661.6	490	540	100	1250	840	205	22	M20
3661.7	550	610	125	1400	940	230	26	M24
3661.8	600	660	125	1600	1060	270	26	M24
3661.9	670	730	150	1800	1200	300	26	M24

Dimensions in mm

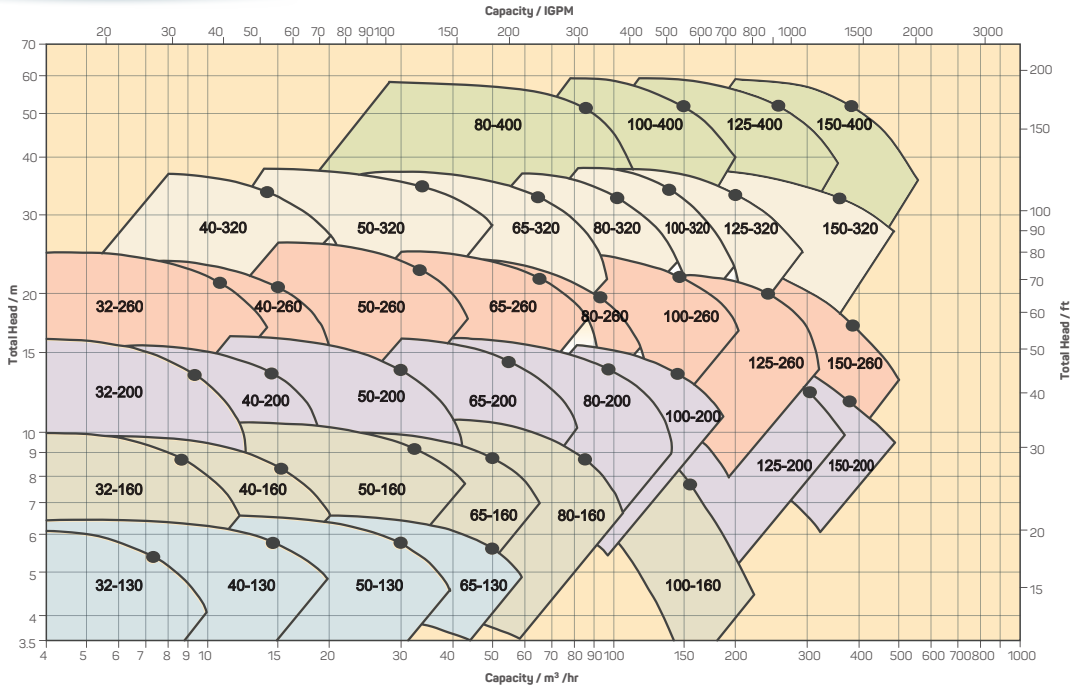
PUMP MODEL	Flanges		Set Dimensions				H and the Standardized Baseplate Number, in Terms of Motor Size (I.E.C)																							
	DNd	DNs	a	f	A	h2	71M	80M	90S	90L	100L	112M	132S	132M	160M	160L	180M	180L	200L	225S	225M	250M	280S	280M						
32-130	32	50	80	385	60	140			212																					
														3661.2																
											160			232				3661.3												
											180			260				3661.2		260										
32-160																														
32-200																														
32-260			100	500	75	225				280								280												
										3661.4																				
40-130	40	65	80	385	60	140			212				232																	
														3661.2				3661.3												
											160			232				3661.2		260										
											180			260				3661.3		260										
											225			280				3661.4		280										
											250			300				3661.5		300										
40-160																														
40-200																														
40-260																														
40-320			125	500	75	250																								
50-130	50	80	100	385	60	160			232																					
														3661.2				3661.3												
											180			260				3661.3		260										
											200			260				3661.3		260										
											225			280				3661.4		280						325				
											280			325				3661.4		325						3661.7				
50-160																														
50-200																														
50-260																														
50-320			125	500	75	225																								
65-130	65	100	100	385	75	180			260																					
														3661.4				3661.4		260										
											200			260				3661.4		260										
											225			280				3661.4		280						325				
											250			300				3661.5		300						350	375			
											280			325				3661.5		325						3661.7				
65-160																														
65-200																														
65-260																														
65-320			125	530	90	225																								
80-160	80	125	125	500	75	225			280																					
														3661.4				3661.5		280										
											250			300				3661.5		300										
											280			325				3661.5		325										
											315			350				3661.6		350										
											355			405				3661.7		405										
100-160	100	125	140	500	90	280			300																					
														3661.5				3661.6		300										
											280			300				3661.5		300										
											315			325				3661.6		325										
											355			350				3661.6		350										
											375			405				3661.7		405										
100-200																														
100-260																														
100-320																														
100-400																														
125-200	125	150	140	500	90	315			350																					
														3661.6				3661.6		350										
											355			350				3661.6		350										
											400			405				3661.8		405										
125-260																														
125-320																														
125-400																														
150-200	150	200	160	500	110	375			405																					
														3661.8				3661.8		405										
											400			465				3661.9		465										
											450			465				3661.9		465										

Baseplate selection based on TECO motor type AEEB and standard couplings

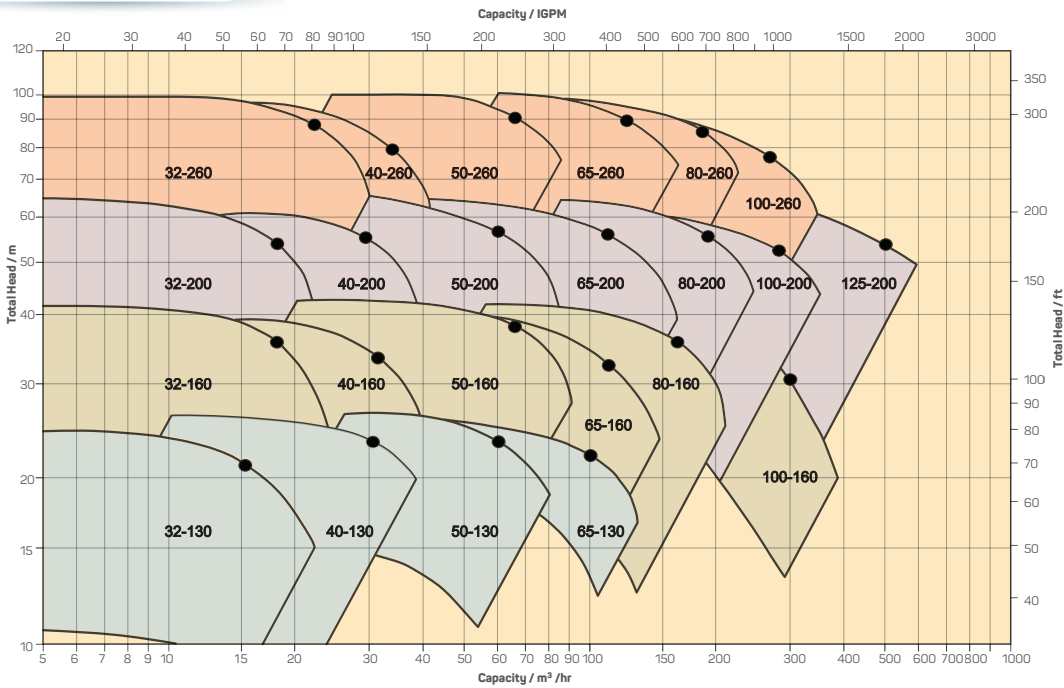
Motor Size and Power IP-55, Standardized to I.E.C.

Power hp at 50 Hz	0.5	0.75	1.0	1.5	2.0	3.0	4.0	5.5	7.5	10	15	20	25	30	40	50	60	75	100	125
Motor Size of 4 Pole	71M	80M	90S	90L	100L	112M	132S	132M	160M	160L	180M	180L	225S	225M	250M	280S	280M			
Motor Size of 2 Pole	71M	80M	90S	90L	100L	112M	132S	132M	160M	160L	180M	180L	200L	225S	225M	250M	280S	280M		

1450RPM



2900RPM



Curves for reference only. For final selection refer to individual pump curve.
Black dots on curves show best efficiency points.

Product specifications subject to change without prior notice.

